

**C. Brad Peterson**  
**Environmental Management and Landscape Architecture**

Tel 519 763-5260 Fax 519 763-5261 edc@sentex.net www.bradpeterson.ca

Nov 4 Jan.05 ●

Y E A R I N R E V I E W

# newsletter update 2005

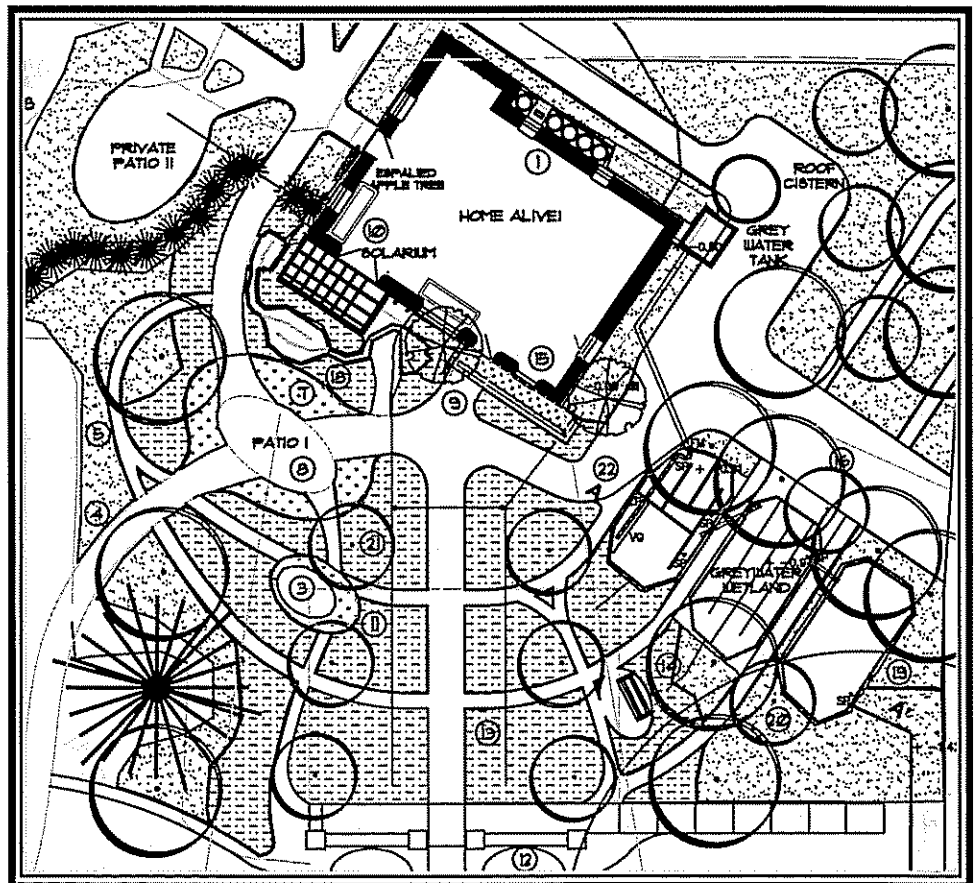
## Home Alive! - Sustainable Landscape Plan at Everdale

Both Home Alive! and its landscape were moved from the 2003 National Home in Toronto to a permanent location at Everdale.

This healthy home and landscape function as one integrated unit which demonstrate practical and easy ways to live sustainably. Among other things the landscape features:

- ▶ rain ponds and micro-swales for garden irrigation
- ▶ a grey water treatment pond and infiltration system
- ▶ permaculture garden design that integrates perennial fruit and nut production with intensive herb and vegetable crops
- ▶ places for entertaining, relaxation and play
- ▶ a green roof, shade trees and hedgerows which improve home operating efficiencies and environmental quality

Other projects are in the works to further develop permaculture and sustainable community design.



Portion of Landscape Plan for Home Alive! at Everdale near Hillsburgh, Ontario.

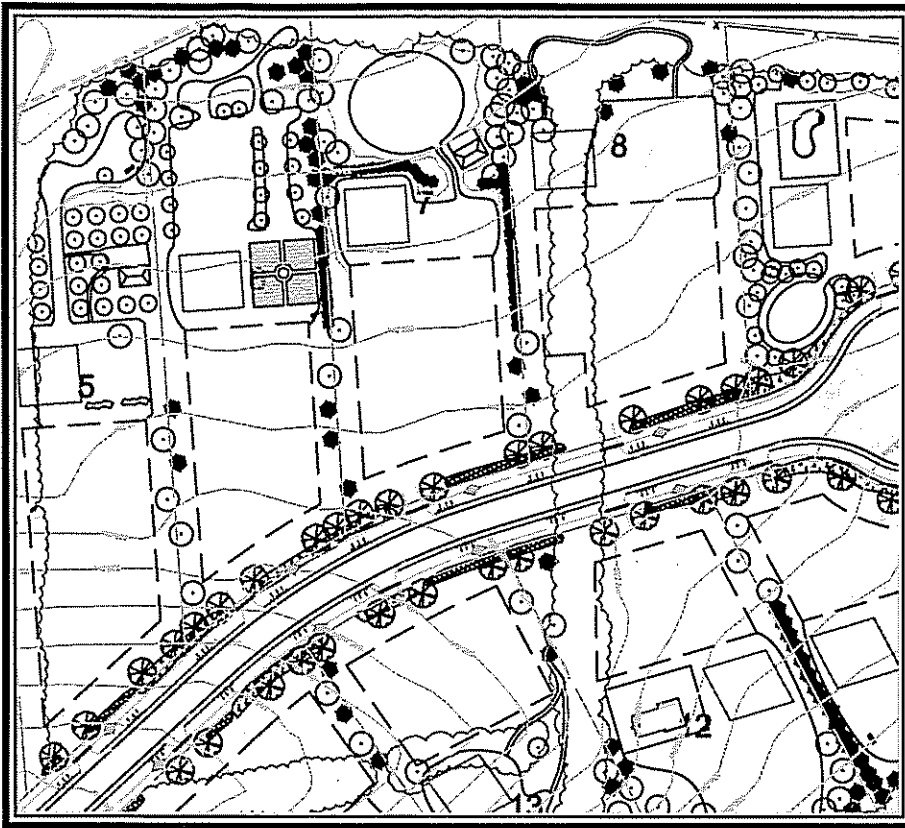
## Property Management and Civil Engineering support

CBP provides landscape and environmental management support for private land owners and engineering professionals involved in public facility development. Examples of recent projects include:

- Hemstock Mills Farm: a comprehensive Master Plan including considerations for historic buildings renovation, conversion to organic

agriculture, multi-use all-season trails and pond improvements.

- Green Venture: Sustainable Landscape Master Plan for EcoHouse & City of Hamilton's delivery of municipal environmental programs.
- QEW at Red Hill Expressway: Environmental design support for MTO-related project. /Page2...



Portion of Charleston Homes Brookville Subdivision Landscape Plan

## Charleston Homes - Brookville Subdivision

The Brookville Subdivision occupies 33 acres near Brookville on the Guelph Line north of the 401. C. Brad Peterson was retained to prepare a conceptual Landscape Plan for the development. Among other features, the Landscape Plan takes into consideration:

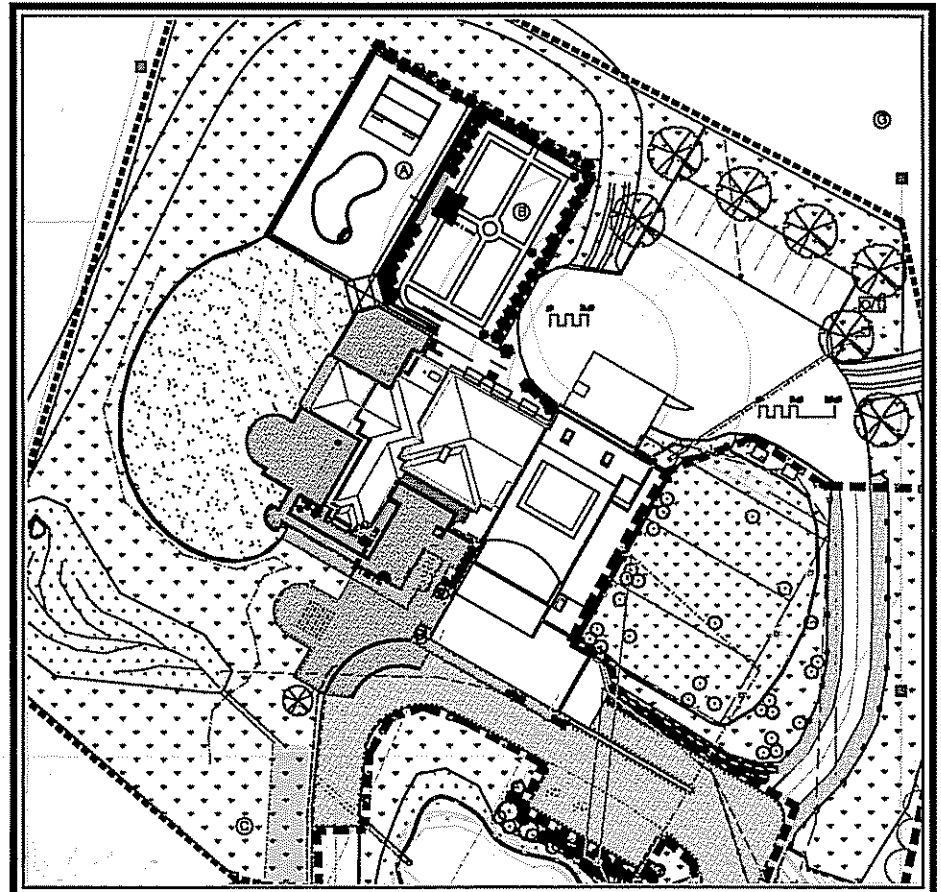
- ▶ permanent protection of on-site hedgerows
- ▶ native vegetative buffers between proposed development and adjacent natural areas
- ▶ recommendations for low maintenance landscapes with seasonally mowed eco-lawns and meadows
- ▶ re-creation of naturalized lane-way plantings and stone fence-rows and
- ▶ an attractive gateway into the development.

## Tawse Family Winery Sustainable Landscape Master Plan

This beautiful winery is located in the Niagara Peninsula wine-producing region of southern Ontario. The Winery Landscape Plan is based on principles of permaculture and bio-dynamics and features:

- landscape plants used in bio-dynamic preparations
- low-growing, low maintenance and pest resistant grasses and wildflower covers
- plant choices that do not attract grape-eating birds but which provide food for people through all four seasons
- a grey water treatment engineered wetland
- a fire pond with water quality improvement technologies
- areas for public reception, wine tasting, and enjoying the views of Lake Ontario and Toronto.

Questions regarding these projects may be directed to Brad Peterson.



Portion of Tawse Family Winery Sustainable Landscape Master Plan