

**C. Brad Peterson**  
**Environmental Management and Landscape Architecture**

Tel 519 763-5260 Fax 519 763-5261 e-mail edc@sentex.net www.sentex.net/~edc/

Jan.03

Y E A R I N R E V I E W

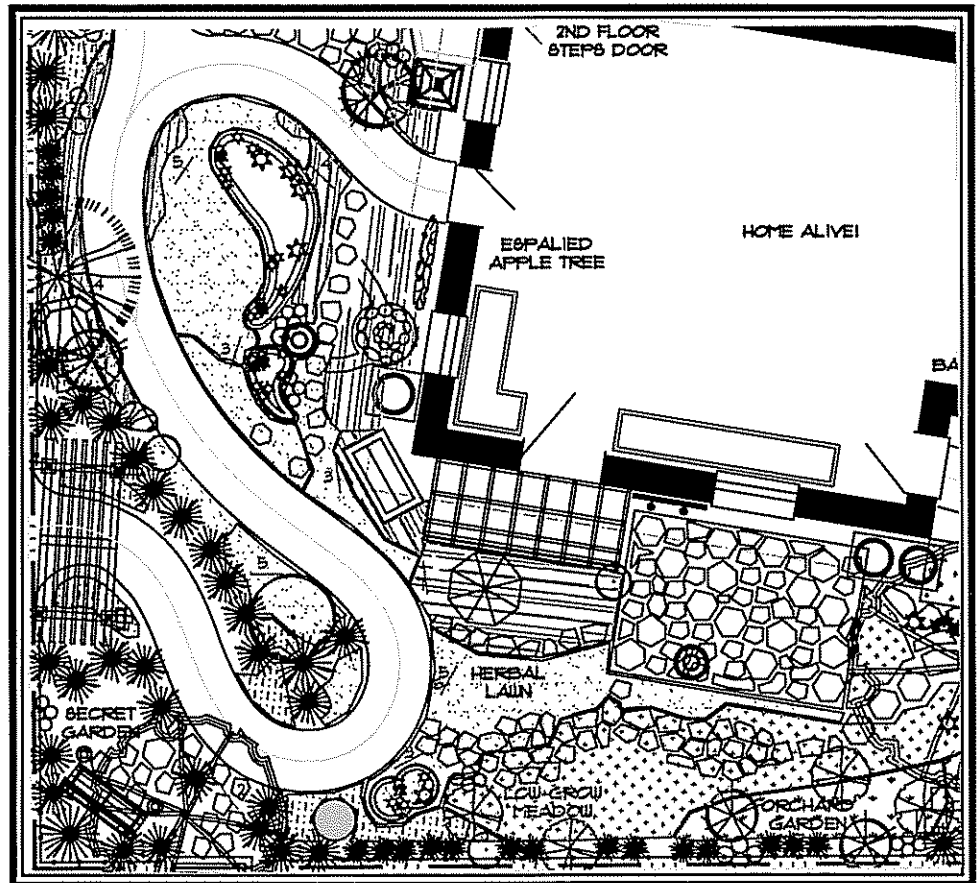
# newsletter update 2003

## Home Alive! - Implementing the Solar Landscape

Working with Harvest Homes of Guelph, CBP designed a new 'solar landscape' to fit ecological, economic and social needs of the healthy home. Both home and landscape will be on display at the National Home Show in Toronto and then moved to a permanent location at the Everdale Learning Centre. The solar landscape:

- ▶ uses ecosystem functions to process local wastes and produce food and fuel,
- ▶ increases the home's energy and resource use efficiency,
- ▶ helps to improve air quality,
- ▶ protects groundwater resources and indigenous plants and animals, and
- ▶ can be applied at any scale, from individual residences to entire eco-developments.

Additional projects are being sought to further express the 'solar landscape' and its application of permaculture and other sustainable land management practices.



Portion of Solar Landscape plan for Home Alive's National Home Show exhibit.

## New Highway 6 from Mount Hope to Hwy 403 - Landscape Plan

CBP specializes in MTO projects and is currently assisting with detailed design of New Highway 6.

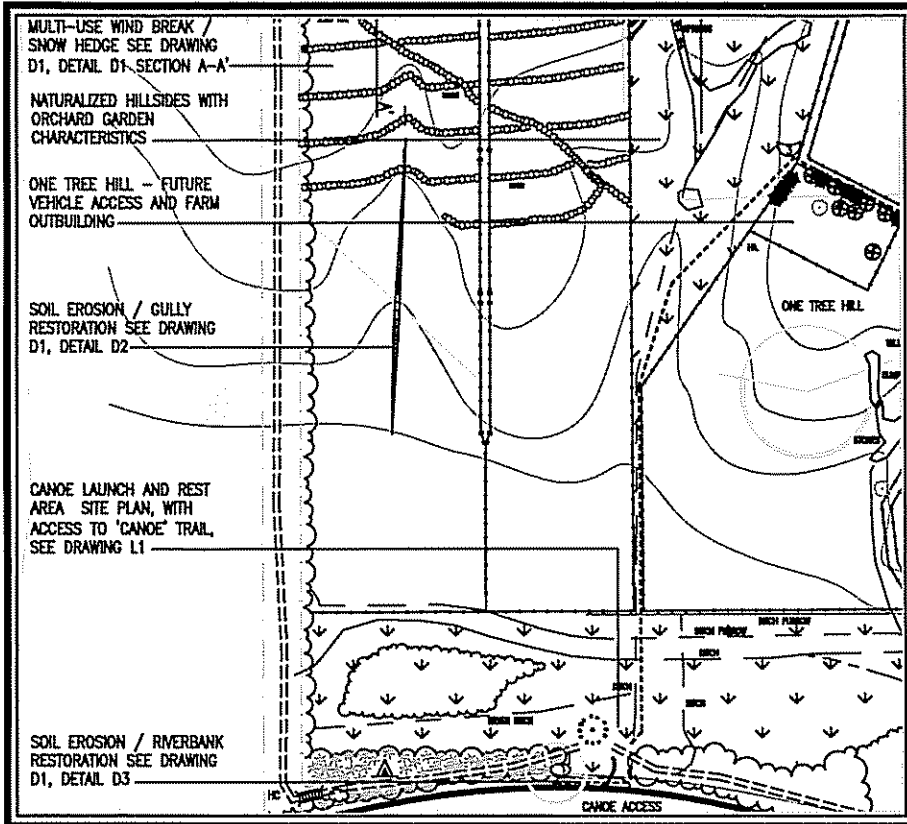
Two major aspects of the project involved a cultural landscape assessment, and a project landscape plan with contract documents.

The cultural landscape assessment involved a review of cultural heritage resources, protection of

views and vistas, and considerations for landscape perception by both users of the new facility and adjacent viewers.

The landscape plan also addressed protection of fisheries habitat, opportunities for forest edge protection and habitat linkage, and highway landscape aesthetics.

/Page 2...



Portion of Saugeen River Farm Environmental Master Plan

## Saugeen River Farm - Environmental Master Plan

The owner of this 196 acre sheep farm on the pastoral Saugeen River near Walkerton, Ontario, wanted water quality, public education and environmental protection to be the focus of this organic farm.

The master plan allows for three concentric trail systems, a canoe launch/rest stop site, considerations for nutrient management, soil erosion, and wildlife habitat corridor management. The owner has participated in the Wetland Habitat Fund program. Future land use will take into consideration an expanded farmstead area to include a Bed & Breakfast cabin, vegetable and flower gardens, and provisions for public parking.

This 'living' master plan allows for logical but flexible strategic farm planning by the farmer.

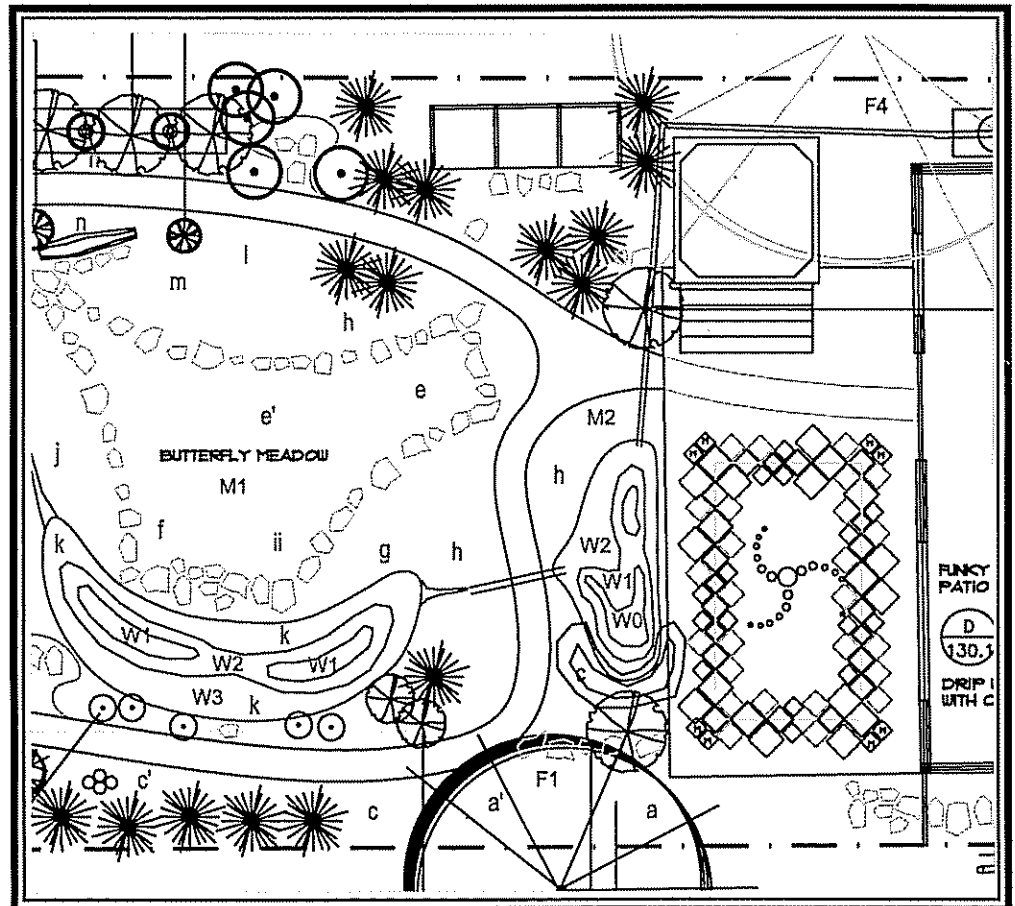
## Pengelley Residence - Landscape Master Plan

### Landscape Master Plan

This beautiful residential landscape is based on a strong environmental ethic and includes such elements as:

- a green driveway with plants grown in seldom-used areas,
- a rain barrel system used to irrigate a natural pond and wet meadow,
- a dry-land butterfly meadow featuring tall grass prairie plantings,
- a 'funky' patio made with a variety of natural and man-made found objects, and
- other elements that contribute to a unique environmental aesthetic.

Questions on this project may be directed to Brad Peterson.



Portion of Pengelley residence Landscape Master Plan