

**C. Brad Peterson
Environmental Management and Landscape Architecture**

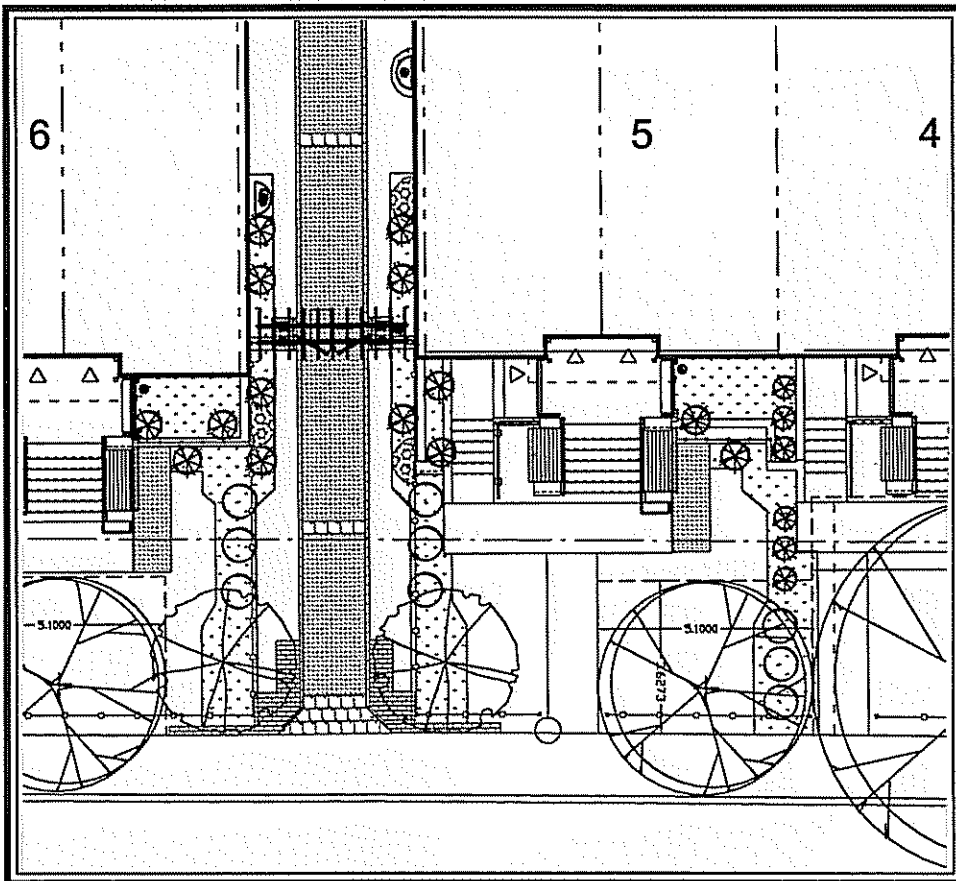
Tel 519 763-5260 Fax 519 763-5261 edc@sentex.net www.bradpeterson.ca

No. 5 Jan.07

Y E A R I N R E V I E W

newsletter update 2007

30 Regent Street- Affordable Housing - LEED Gold Certified



Portion of 30 Regent Street Affordable Housing Landscape Plan.

Administered by the Toronto Community Housing Corporation, 30 Regent St. is precursor to the rest of the reconstruction of Regent Park, a low-income government-assisted affordable housing community in Toronto.

In association with Hilditch Architect, Brad Peterson designed the landscape for the 48 unit townhouse complex based in part on urban permaculture principles. The landscape contributes to LEED Gold Certification and features:

- ▶ high albedo impervious surfaces and a generous component of permeable paving
- ▶ plant list composed of min. 90% drought-resistant plants
- ▶ limited grass areas seeded in low-maintenance ecolawn
- ▶ minimum 50% hard surfaces shaded by woody plants
- ▶ vegetated privacy screens
- ▶ edible species of trees, shrubs and vines as integral component of planting design.

Property Management and Civil Engineering support

CBP provides landscape and environmental management support for private land owners, architects and engineers involved in both public and private initiatives. Recent projects include:

- Westchester Estates Subdivision This Charleston Homes project protects existing farm hedgerows and reveals intrinsic qualities

of place while accommodating development of a 33 acre property near Brookville, Ontario

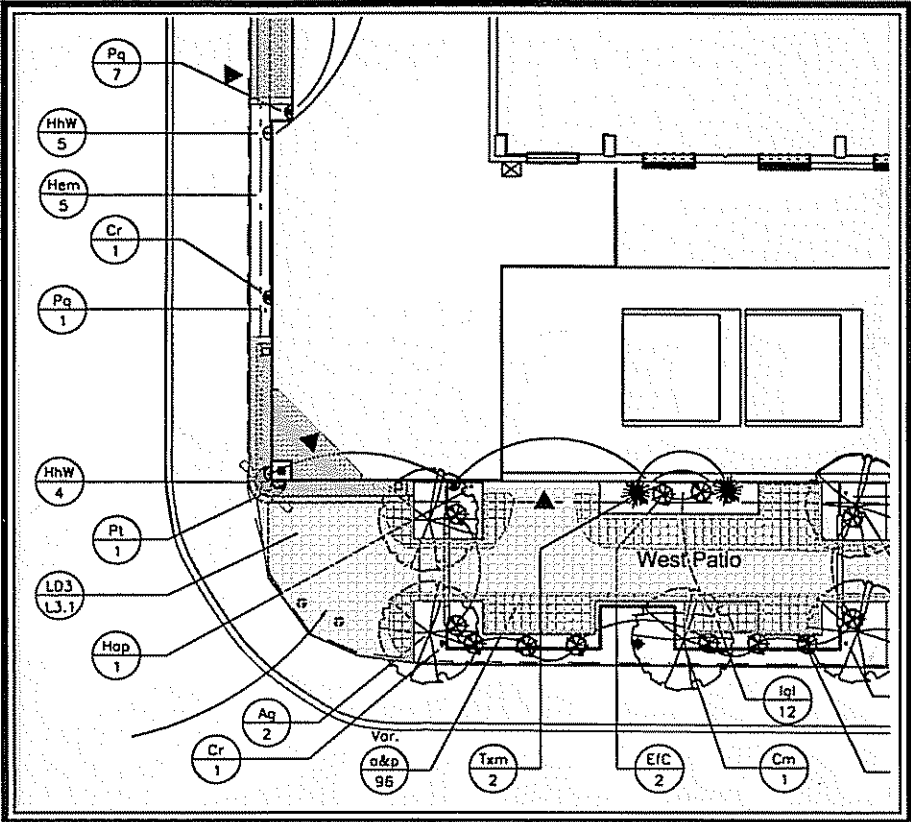
- I CAN-T.E.R. Therapeutic Equestrian Centre: This 100 acre property in the Niagara Region is implementing a sustainable farm management plan. The new equestrian building features efficient renewable energy systems. /Page2...

Green Phoenix - Affordable Housing

Owned by the Parkdale United Church in Toronto, the Green Phoenix project will bring additional affordable housing and associated amenity space to Phoenix Place and Shalom House in Parkdale.

In association with Hilditch Architect, Brad Peterson prepared the Landscape Plan with supporting contract documents that includes:

- ◆ barrier-free access to an extensive Green Roof of herbs, wildflowers and grasses
- ◆ rain water collection for toilet flushing
- ◆ extension of the Church precinct outdoors to a fenced garden area with herbs set within permeable paving, and comfortable seating among flowering trees
- ◆ a recycling and reuse plan to minimize ecological footprint.



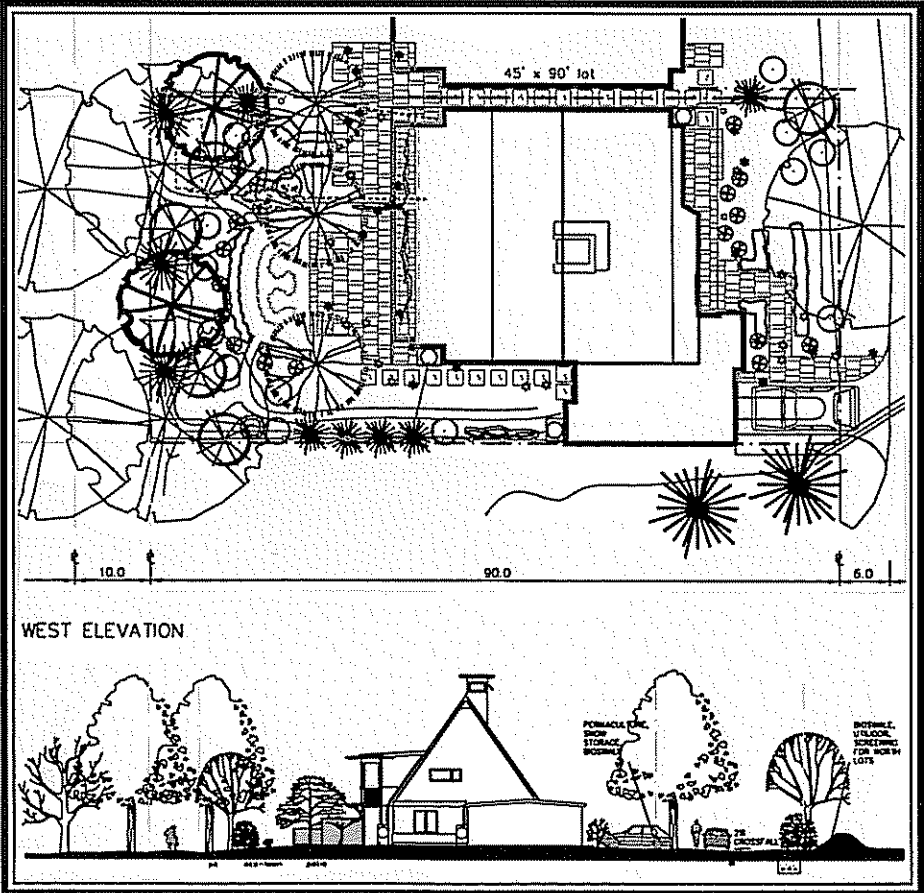
Portion of Green Phoenix Sustainable Landscape Plan

TRCA Dx Archetype Housing Competition - Green Innovation Award

Brad Peterson collaborating with Martin Liefhebber of Breathe Architects designed the award-winning mc2=e home for the Living City Archetype Design Competition. The home features:

- flexible life-cycle and live-work easily-convertible floor plans
- 'rib system' framing
- energy-friendly permacultural landscape spaces adaptable to various home living-unit layouts
- grid-tied, neighbourhood-generated power system
- 'Fatwall' biofiltration appliance for sewage treatment
- green driveway with flex carport
- site design that acknowledges optimal solar orientation for north-side and south-side of street.

Questions regarding this and other projects may be directed to Brad Peterson.



Plan and Elevation of TRCA Dx Green Innovation Award home and landscape